



8 Thurlow Park Road, SE21 | £650,000

02087029999

[newhomes@pedderproperty.com](mailto:newhomes@pedderproperty.com)

**pedder**  
NEW HOMES

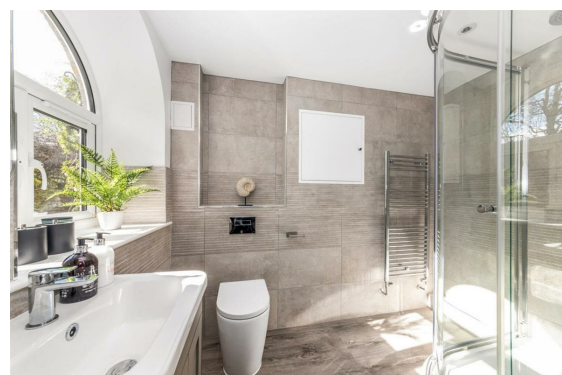


# In General

- 2 Double Bedrooms
- 2 Bathrooms
- Period Conversion
- Completely Refurbished
- Off-Street Parking
- Private Garden
- Study
- Close to Tulse Hill Station

# In Detail

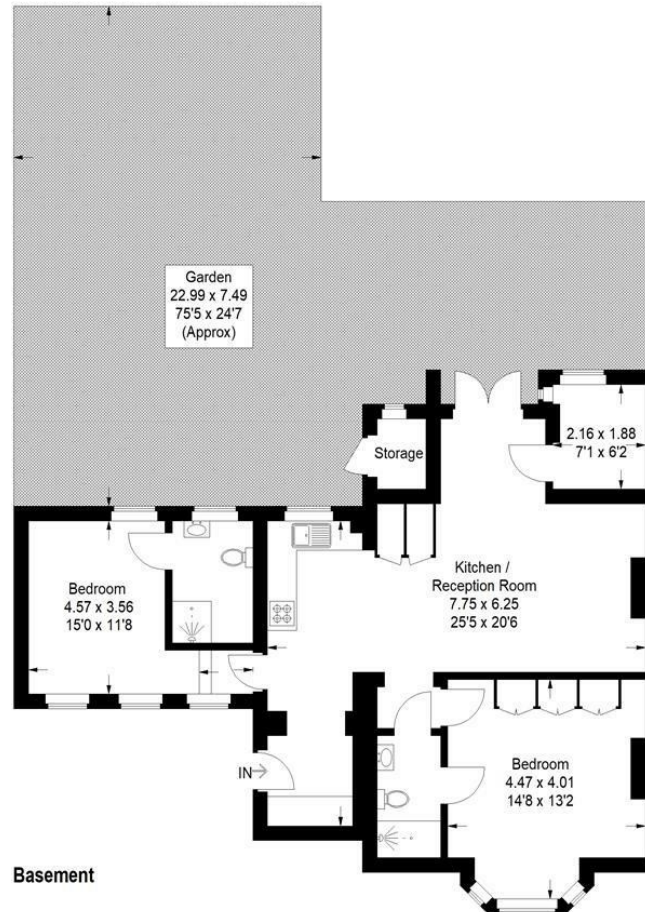
Wonderful 2 bedroom, 2 bathroom property with private garden and off-street parking set within converted Victorian building



# Floorplan

Thurlow Park Road, SE21

Approximate Gross Internal Area  
(Excluding Storage)  
82.1 sq m / 884 sq ft



Basement

Copyright www.pedderproperty.com © 2025  
These plans are for representation purposes only as defined by RICS - Code of Measuring Practice.  
Not drawn to Scale. Windows and door openings are approximate. Please check all dimensions, shapes and compass bearings before making any decisions reliant upon them.

Energy Efficiency Rating		Current	Potential
Very energy efficient - lower running costs			
102 plus) A			
81-101) B			
69-80) C			
55-68) D			
39-54) E			
21-38) F			
1-20) G			
Not energy efficient - higher running costs			
England & Wales		EU Directive 2002/91/EC	

Pedder Property Ltd trading as Pedder for themselves and for the vendor/landlord of this property whose agents they are, give notice that (1) these particulars do not constitute any part of an offer or contract, (2) all statements contained within these particulars are made without responsibility on the part of Pedder or the vendor/landlord, (3) whilst made in good faith, none of the statements contained within these particulars are to be relied upon as a statement of representation or fact, (4) any intending purchaser/tenant must satisfy him/herself by inspection or otherwise as to the correctness of each of the statements contained within these particulars, (5) the vendor/landlord does not make or give either Pedder or any person in their employment any authority to make or give representation or warranty whatsoever in relation to this property.